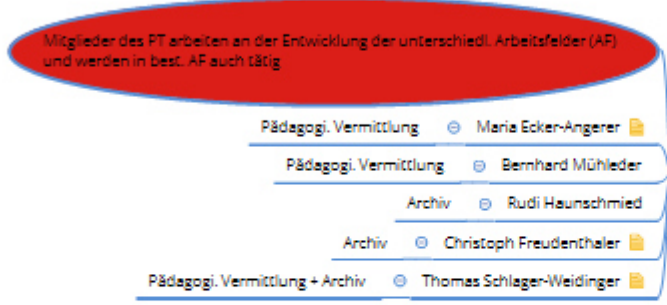
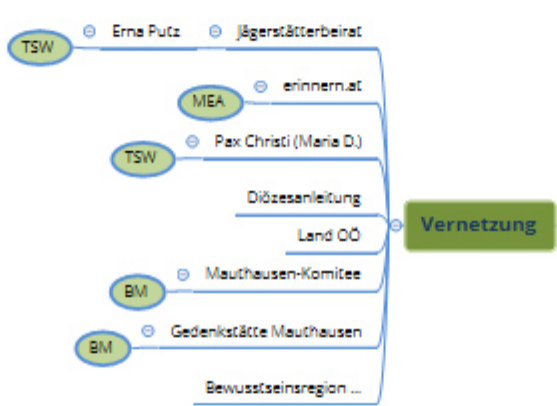
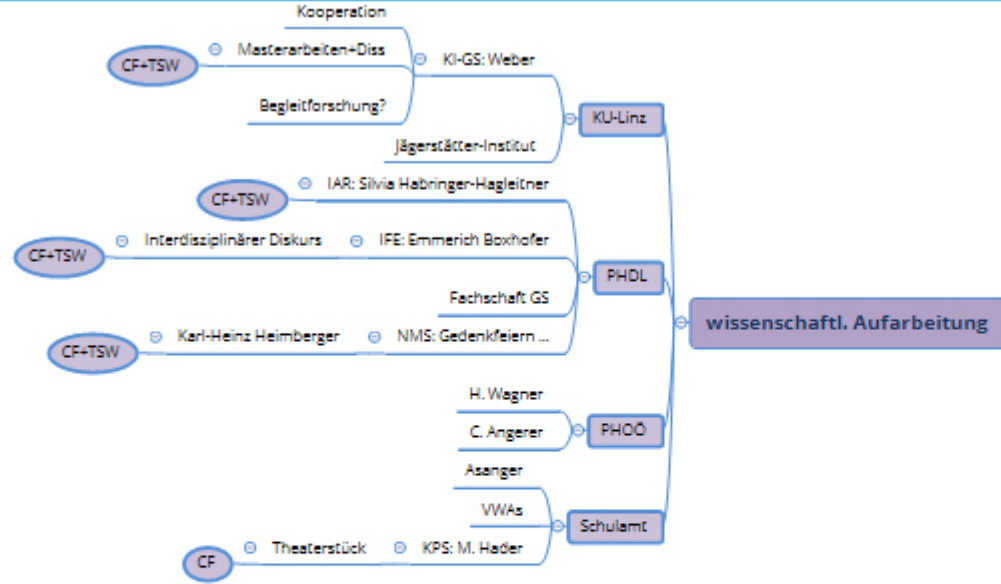
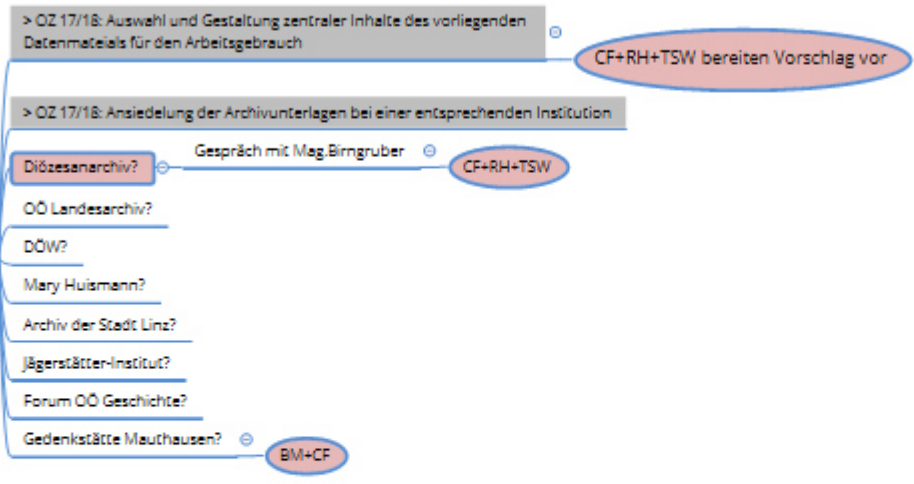


PHDL-Forschungsprojekt "Grub"



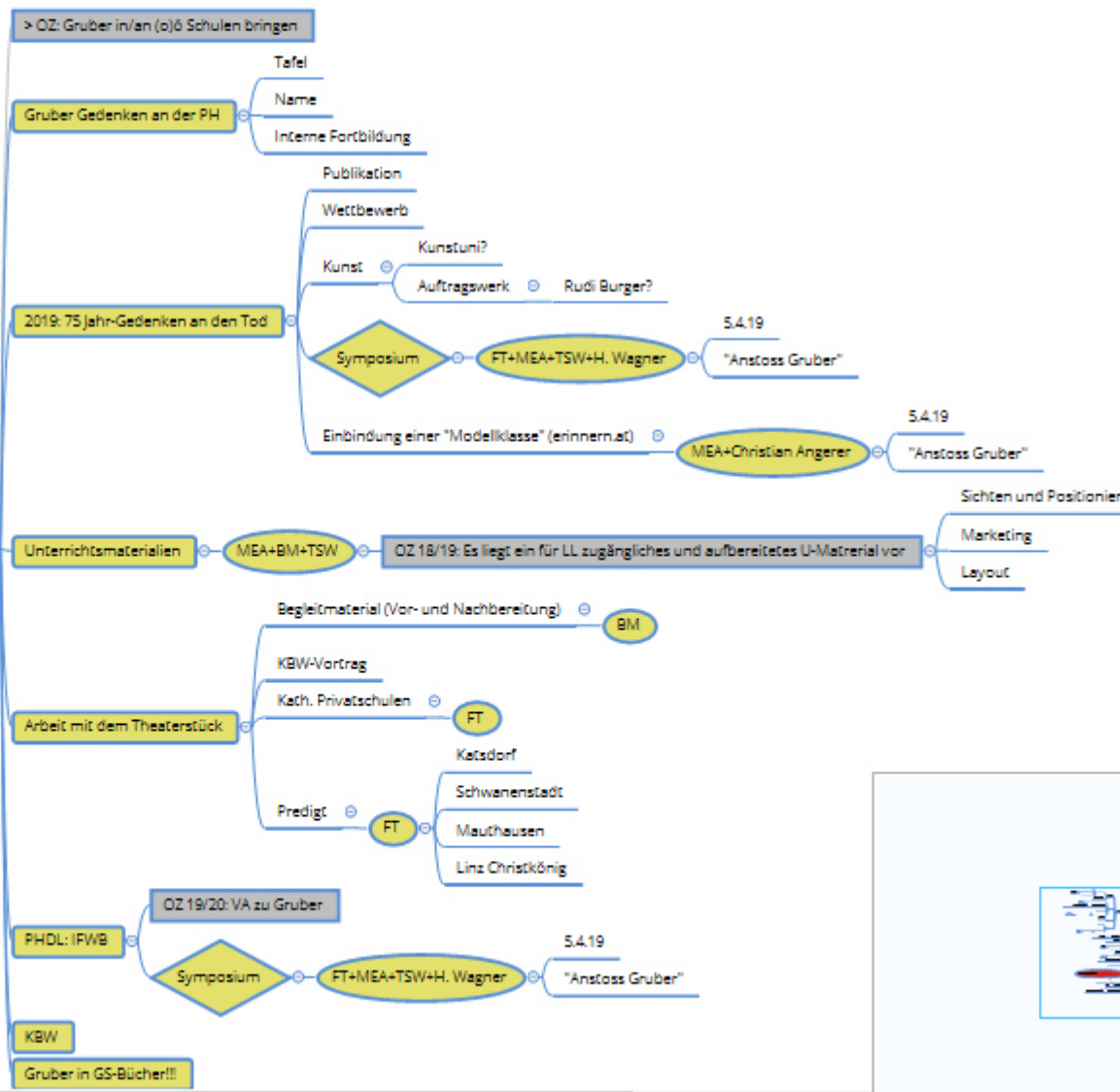
ABKÜRZUNGEN:
 OZ: Operative Ziele
 AF: Arbeitsfelder
 PT: Projektteam
 MEA: Maria Ecker-Angerer
 BM: Bernhard Mühleder
 RH: Rudi Haunschmied
 CF: Christoph Freudenthaler
 TSW: Thomas Schlager-Weidinger

Archiv



er"

pädagogische Vermittlung



en

